

POWER. EFFICIENCY. RELIABILITY.



EVO II **Dual R** | **Dual** 640T

The Most Compact &
Advanced Thermal Drone



Autel Robotics works with the best global partners to offer innovative products for your enterprise needs.
To locate the Autel dealer closest to you, visit autelrobots.com/pages/evo-ii-dual-authorized-dealers

autelrobots.com

Dual R | Dual 640T At a Glance



5.5 mi
HD Transmission



38 min
Flight Time



Missions
Point-and-click Waypoints



SDK 2.0
Open SDK for EVO II

640 x 512
Thermal Resolution



8K
HDR Video



48MP
Visual Camera



16x
Digital Zoom



Autel Robotics works with the best global partners to offer innovative products for your enterprise needs.
To locate the Autel dealer closest to you, visit autelrobots.com/pages/evo-ii-dual-authorized-dealers

autelrobots.com

A New Generation of **Thermal Sensor**

Advanced Thermal Camera

The new generation of the Autel Robotics thermal imaging sensor has a resolution of up to 640x512@30 fps. It also comes standard with a 13mm lens, 16x digital zoom, and is capable of recognizing subjects at up to 100 m away.

640x512 Resolution

High-res thermal imaging allows the pilot to see more detail or fly farther away to avoid alerting the subject.

30Hz Refresh Rate

The 30Hz refresh rate matches the thermal camera to the optical video frame rate, allowing for smooth, live shooting.



Payload Options

Autel offers two 640x512 camera options, one from FLIR and one from InfiRay. The cameras are nearly identical, with export regulations and software kits being the only major differences.

Multiple Display Modes

The thermal image is integrated into the standard RGB image. This allows the user to obtain both visual and thermal data simultaneously and allows for easier positioning and subject tracking.

Thermal Solutions



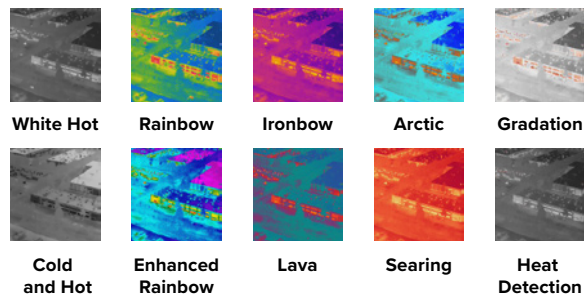
Dual Radiometric Sensor

Developed by our partners, the 640T sensor is equipped with an 8K sensor for high-resolution RGB capture and thermal imaging up to 640x512.



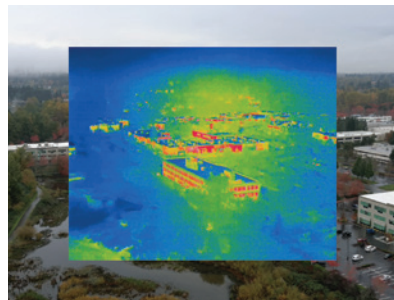
4x Lossless Zoom and 16x Digital Zoom

With 16x digital zoom and 4x lossless zoom, operators can crop an image or zero in on a target without compromising quality.



10 Thermal Color Modes

EVO II Dual supports up to 10 thermal palettes to cope with a variety of complex shooting environments and mission scenarios.



Picture-in-Picture Mode

An overlay of both your thermal and visible light data in one image allows for easier positioning and subject tracking.

Intelligent Software Features

Temperature Measurement Modes



Central temperature measurement

View real-time temperature display in the center area of the screen.



Spot temperature measurement

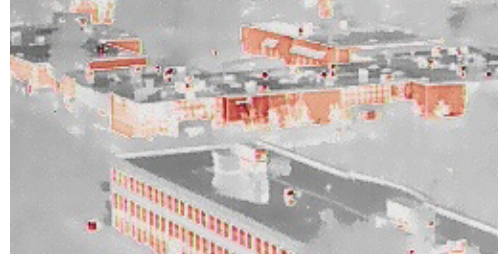
Tap the screen, and the temperature of the selected object will be displayed in real time.



Regional temperature measurement

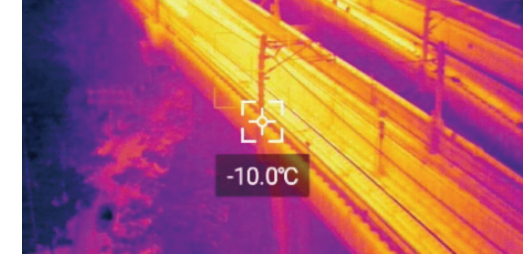
Get a dynamic view of the average temperature, maximum temperature, and minimum temperature displayed in a selected area.

Isotherm Mode



When using Isotherm, users can select a range of temperatures that will highlight onscreen, while the rest of the image remains greyscale. This allows for a camera feed with lower noise, allowing users to gather relevant information more easily.

Radiometric Mode



Radiometric imaging modes allow pilots to record exact temperatures recorded by every pixel of the camera. This allows for accurate data gathering and high-precision analysis.

EVO II **Dual R**



FLIR Thermal Studio Suite

Manage thousands of thermal images and videos with advanced tools (Dual R)



Made in the USA

FLIR products are primarily manufactured in the USA from globally sourced materials.



Non-Regulated

The InfiRay camera is not subject to ITAR regulations or export restrictions



Autel IR PC

A powerful infrared thermal analysis tool (Dual 640T)

Intelligent Software Features

EVO II Dual R | **FLIR**

Supports FLIR Thermal Studio Suite



**View and Edit
Radiometric Images**



**Stream and Edit
Radiometric Video**



**Panorama
Image Mode**



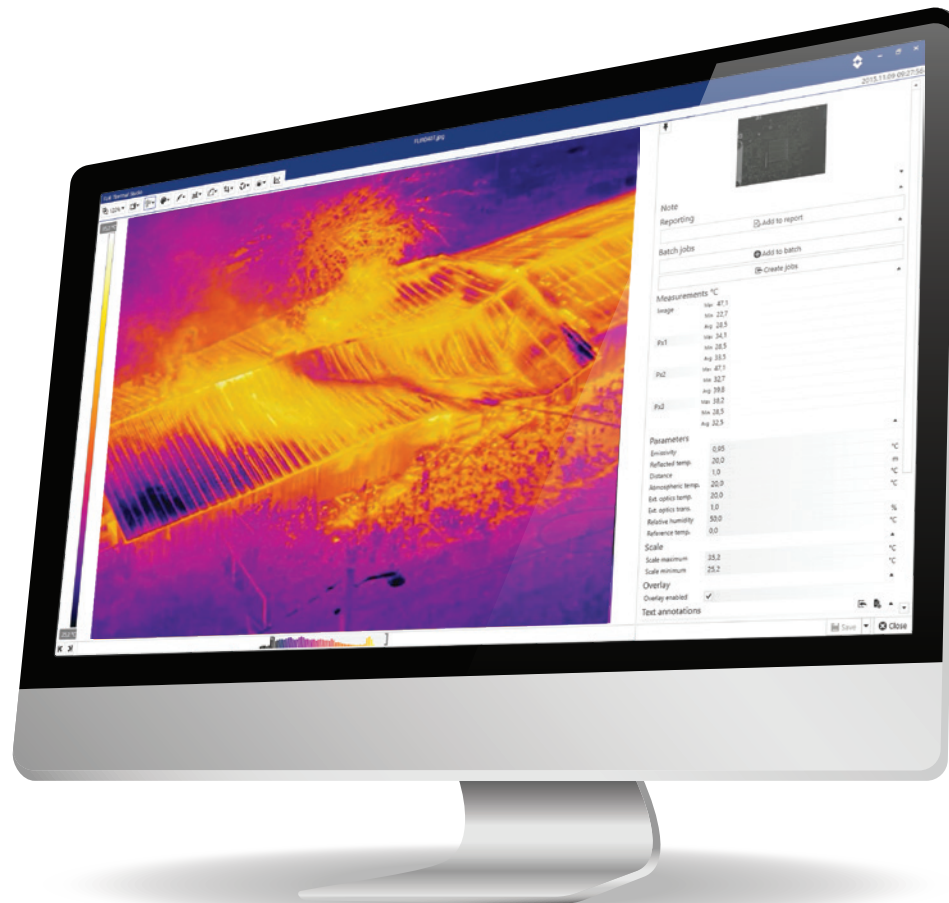
**Custom Image
Overlays**



**Pre-defined
up to 5 Custom
Report Templates**



**Measurement Functions:
Spot, Box, Ellipse,
Line, Delta, Profile**



Practical Use Cases

EVO II Dual R / Dual 640T is a robust, flexible, and smart solution. Its quick and easy setup, interchangeable payloads, and powerful AI capabilities make it the perfect tool for a variety of practical applications.



Public Safety



Firefighting & Fire Prevention



Traffic Monitoring & Management



Search & Rescue



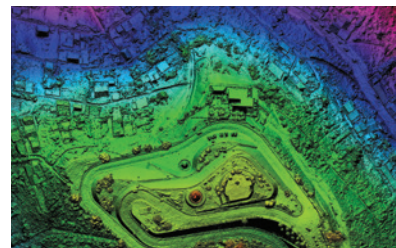
Power Line Inspections



Chemical Inspections



Solar Inspection



Mapping

EVO II Dual R | Dual 640T Rugged Bundle



Bundle Includes:

Aircraft (Including Battery, Gimbal Cover, and Propellers)	1
Spare Battery	2
Remote Controller	1
110V Charger	1
32GB U3 SD Card	1
12" Cable USB Micro A - USB Type C	1
Spare Propellers (pair)	2
EVO II Hard Rugged Case	1
12" Cable USB Micro A - USB Micro B	1
12V Car Charger	1
4-Position Battery Charging Hub	1
Packing List	1
Quick Guide	1
Disclaimer & Safety Instructions	1
Battery Safe Use Guide	1

EVO II Enterprise **Dual R | Dual 640T** Bundle



Bundle Includes:

Aircraft and Gimbal Cover	1
Battery	1+2
7.9" Smart Controller	1
110V Charger	1
Smart Controller Charger	1
Smart Controller Charging Cable	1
Speaker	1
Search Light	1
Strobe	1
Chest Strap	1
Attachment Port Cover	1
Propellers (Pair)	4
EVO II Hard Rugged Case	1
12V Car Charger	1
4-Position Battery Charging Hub	1
SkyBrowse (2 Week Free Trial)	1
Pix4D React (One Year Free Trial)	1
Airdata (30 Day Free Trial)	1

Technical Specifications

10

Aircraft

Takeoff Weight (Without Accessories)	EVO II Pro: 2.45lbs (1110g) EVO II 640T: 2.51lbs (1136.5g) EVO II Dual R: 2.51lbs (1136.5g)
Diagonal Length	20in (508mm)
Max Flight Time (No Wind)	38min
Operating Temperature	14°F to 104°F (-10°C to 40°C)
Max Wind Speed Resistance	89mph (17m/s)
Operating Frequency	2.400GHz - 2.4835GHz; 5.725GHz - 5.850GHz
Hovering Accuracy Range	Vertical: ± 0.65ft (0.2m) (accurate visual positioning); ± 0.65ft (0.2m) (accurate GPS positioning) Horizontal: ±0.65ft (0.2m) (accurate visual positioning); ± 1.64ft (0.5m) (accurate GPS positioning)

Gimbal

Operation Range	Pitch: -135° to +45°; Yaw: -100° to +100°
Stability	More Stable with 3 Axes
Max Control Speed (Tilt)	300°/s
Angular Vibration Range	±0.005°

Thermal Camera



Infrared Camera Sensor	Uncooled VOx Microbolometer	Uncooled VOx Microbolometer
Sensor Resolution	EVO II Dual (640) 640x512	Infrared mode: 640*512
Pixel Pitch	12 μm	12 μm
Wavelength Range	7.5~13.5 μm	8~14 μm
FOV	EVO II Dual (640) 32°	H33°V26°
Image Sensor	1/2" CMOS	1/2" CMOS
Thermal Sensitivity/NEΔT	<50 mK	-
Zoom	1 ~ 8x	1 ~ 8x
Still Photography Modes	Single shot, burst and time-lapse	Single shot, continuous shooting, time-lapse
Still Photography Resolution	IR: 640*512 PIP: 1920*1080, 1280*720	IR: 640*512 PIP: 1920*1080, 1280*720
Video Format	MOV/MP4 (H.264/H.265)	MOV/MP4 (H.264/H.265)
Video Resolution	640*512 30Hz (US)	640*512 30fps
Manufacturer	FLIR Boson	InfiRay

Visual Camera

Image Sensor	1/2" CMOS	1/2" CMOS
Pixels	48MP	48MP
Perspective	82°	79°
ISO	Video: 100-6400 (auto) Photo: 100-3200 (auto)	Video: 100-6400 (auto) Photo: 100-3200 (auto)



Autel Robotics works with the best global partners to offer innovative products for your enterprise needs.
To locate the Autel dealer closest to you, visit autelrobotics.com/pages/evo-ii-dual-authorized-dealers

autelrobotics.com

Where to **Buy**

Find a Dealer

Autel Robotics works with the best global partners to offer innovative products for your enterprise needs. To locate the Autel dealer closest to you, visit:

auteldrones.com/pages/evo-ii-dual-authorized-dealers

Our Dealer Network



Adorama

advēxure

amazon



BEST BUY



CloudCity Drones



DRONEFLY

DRONENERDS



EMPIRE DRONE



GRESKO



Autel Robotics works with the best global partners to offer innovative products for your enterprise needs. To locate the Autel dealer closest to you, visit auteldrones.com/pages/evo-ii-dual-authorized-dealers

autelrobotics.com

MAXIMUM PERFORMANCE, ENDLESS POSSIBILITIES



AUTEL
ROBOTICS

22522 29th Dr SE, Bothell,
Washington US

autelrobotics.com

